

# Mixed Media Arts

www.mixedmediaart.net

At  $3\frac{1}{2}$  cables  $097^\circ$  from this point, at stone LXXV., is the western end of a conspicuous white sand bluff, about 40 feet high extending eastward  $1\frac{1}{2}$  cables through a break in the marram; between here and the river, the land backing the coast dunes rises to about 100 feet. At  $030^\circ$  5 cables from the west end of the white sand bluff, Darlot's Creek from a northerly course joins the coast River, from which point westward and northward the course of the latter named river is through a flow of heavy basalt country overgrown with bracken about 20 cables wide between the lime country on either side of it. From stone LXXV., the sand dune coast trends  $9\frac{1}{2}$  cables at  $103^\circ$  to stone LXXVI., with the Fitzroy running about 4 cables north of it through fertile farm lands; at  $087^\circ$  distant 3.19 cables.

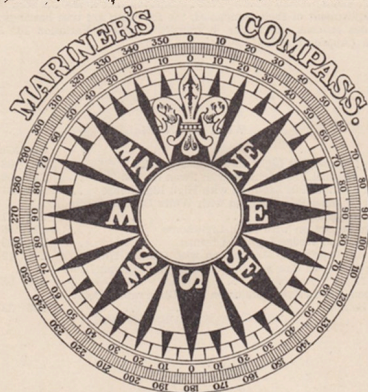
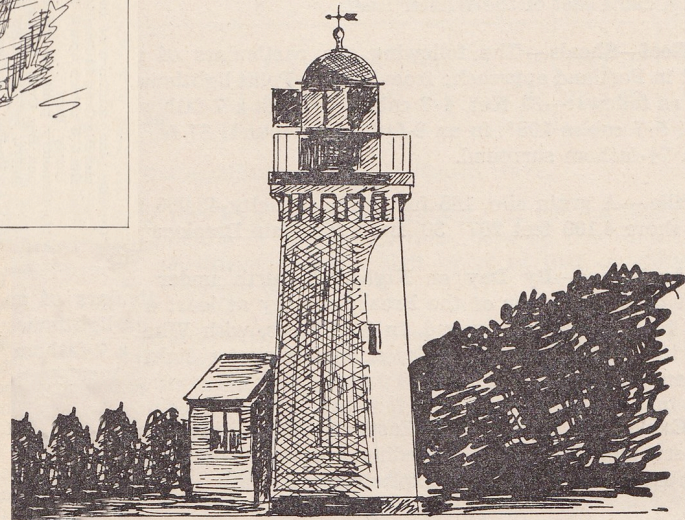
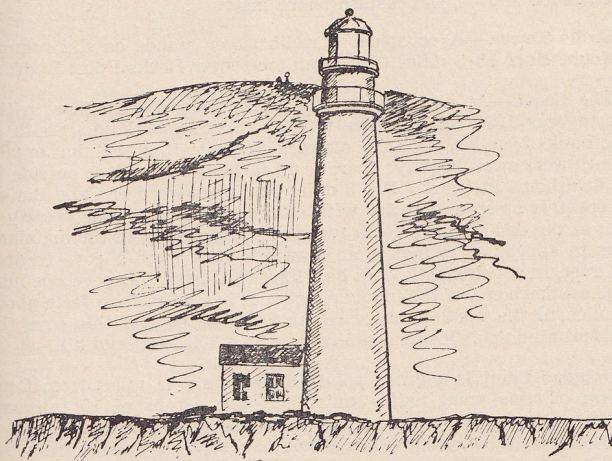
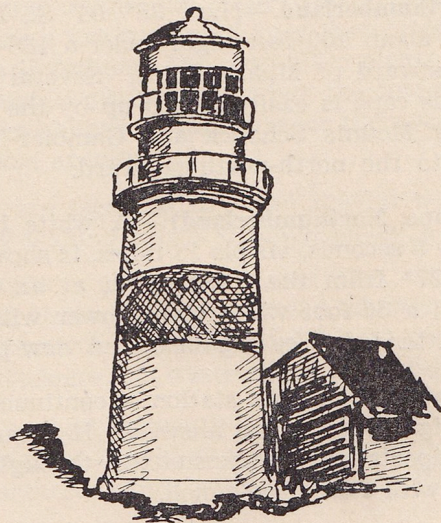
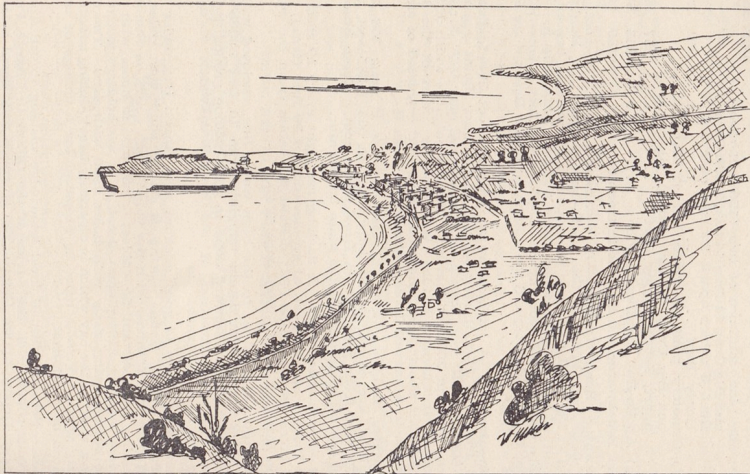


TABLE OF THE ANGLES  
which every Point and Quarter Point of the Compass makes with the Meridian.

North.		Points	° ' "	Points	South.	
$\frac{1}{4}$		$\frac{1}{4}$	2 . 48 . 45	$\frac{1}{4}$		
$\frac{1}{2}$		$\frac{1}{2}$	5 . 37 . 30	$\frac{1}{2}$		
$\frac{3}{4}$		$\frac{3}{4}$	9 . 26 . 15	$\frac{3}{4}$		
N.b.E.	N.b.W.	1	11 . 15 . 0	1	S.b.E.	S.b.W.
$1\frac{1}{4}$		$1\frac{1}{4}$	14 . 3 . 45	$1\frac{1}{4}$		
$1\frac{1}{2}$		$1\frac{1}{2}$	16 . 52 . 30	$1\frac{1}{2}$		
$1\frac{3}{4}$		$1\frac{3}{4}$	19 . 41 . 15	$1\frac{3}{4}$		
N.N.E.	N.N.W.	2	22 . 30 . 0	2	S.S.E.	S.S.W.
$2\frac{1}{4}$		$2\frac{1}{4}$	25 . 18 . 45	$2\frac{1}{4}$		
$2\frac{1}{2}$		$2\frac{1}{2}$	28 . 7 . 30	$2\frac{1}{2}$		
$2\frac{3}{4}$		$2\frac{3}{4}$	30 . 56 . 15	$2\frac{3}{4}$		
N.E.b.N.	N.W.b.N.	3	33 . 45 . 0	3	S.E.b.S.	S.W.b.S.
$3\frac{1}{4}$		$3\frac{1}{4}$	36 . 33 . 45	$3\frac{1}{4}$		
$3\frac{1}{2}$		$3\frac{1}{2}$	39 . 22 . 30	$3\frac{1}{2}$		
$3\frac{3}{4}$		$3\frac{3}{4}$	42 . 11 . 15	$3\frac{3}{4}$		
N.E.	N.W.	4	45 . 0 . 0	4	S.E.	S.W.
$4\frac{1}{4}$		$4\frac{1}{4}$	47 . 47 . 45	$4\frac{1}{4}$		
$4\frac{1}{2}$		$4\frac{1}{2}$	50 . 37 . 30	$4\frac{1}{2}$		
$4\frac{3}{4}$		$4\frac{3}{4}$	53 . 26 . 15	$4\frac{3}{4}$		
N.E.b.E.	N.W.b.W.	5	56 . 15 . 0	5	S.E.b.E.	S.W.b.W.
$5\frac{1}{4}$		$5\frac{1}{4}$	59 . 3 . 45	$5\frac{1}{4}$		
$5\frac{1}{2}$		$5\frac{1}{2}$	61 . 52 . 30	$5\frac{1}{2}$		
$5\frac{3}{4}$		$5\frac{3}{4}$	64 . 41 . 15	$5\frac{3}{4}$		
E.N.E.	W.N.W.	6	67 . 30 . 0	6	E.S.E.	W.S.W.
$6\frac{1}{4}$		$6\frac{1}{4}$	70 . 18 . 45	$6\frac{1}{4}$		
$6\frac{1}{2}$		$6\frac{1}{2}$	73 . 7 . 30	$6\frac{1}{2}$		
$6\frac{3}{4}$		$6\frac{3}{4}$	75 . 56 . 15	$6\frac{3}{4}$		
E.b.N.	W.b.N.	7	78 . 45 . 0	7	E.b.S.	W.b.S.
$7\frac{1}{4}$		$7\frac{1}{4}$	81 . 33 . 45	$7\frac{1}{4}$		
$7\frac{1}{2}$		$7\frac{1}{2}$	84 . 22 . 30	$7\frac{1}{2}$		
$7\frac{3}{4}$		$7\frac{3}{4}$	87 . 11 . 15	$7\frac{3}{4}$		
East	West	8	90 . 0 . 0	8	East	West